

An illustration of a diverse group of people, including men and women of various ethnicities, all wearing face masks. The style is flat and colorful, with a palette of blues, oranges, pinks, and light blues. The background is a mix of these colors, creating a sense of a community. A white, torn-paper-like border is at the bottom.

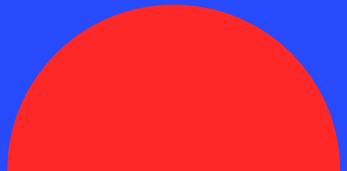
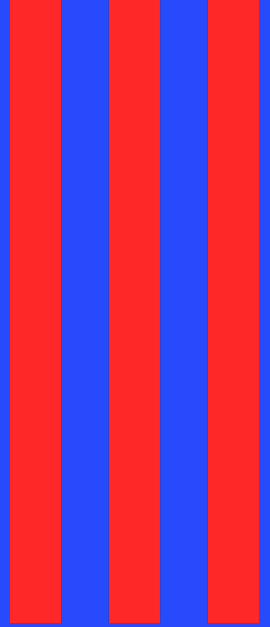
CHW importance & role

Sabina Bagirova.

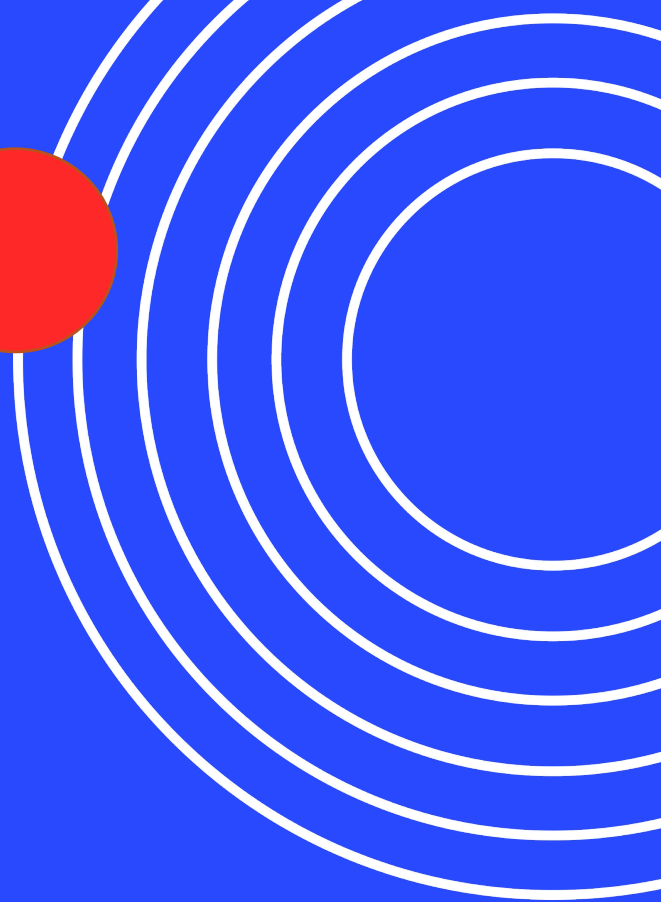
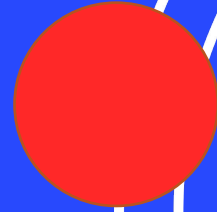
Joyce Mcraney.

CHW Discussion

Sabina Bagirova



Video: Made to Save-CHW spotlight





Personal Experience Story



Background

- Lost Jobs
- Working remotely
- Many losses
- People of color and immigrants
- Isolation/mental health problems



Working Through COVID-19

- Remote work/communication style
- Workload and lack of staff
- Virtual/over the phone resources
- Change of lifestyle
- Barriers/religious belief



Connecting People to Resources

- Covid-19 resources (testing, vaccination)
- Pop-up vaccine clinic
- COVID-19 test kits and masks
- Teleheath
- Community resources/benefits (SDOH)
- UniteUS
- Language assistance



Overcoming Barriers



- Vaccine hesitancy
- Minimize miscommunication
- Educational materials (CDC website)
- Covid-19 prevention (hand washing)
- Testing/clinical care
- Health access (appointment)
- Trusted relationship with CHW
- CHW represent community

Shareboard Activity

“Share your story”

5 minutes

Jam Board

Thank you!

